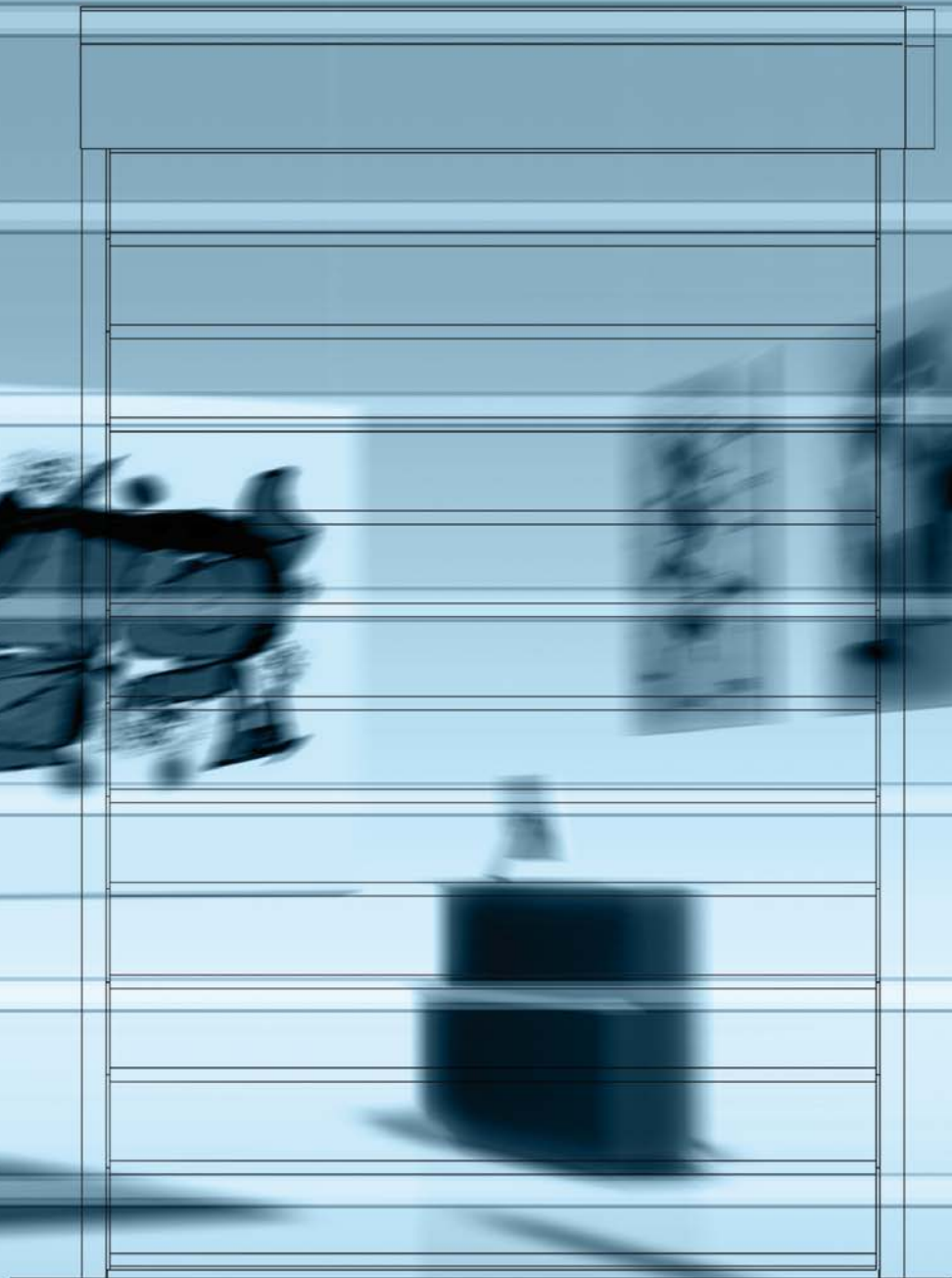


INTELLIGENT | PROFESSIONELL | SOLIDE



## Mobile Partition Wall

**BUTZBACH**  
DOORS+FAÇADES

  
**PALMERS**



# Made in Germany

Unique Technology

Effective protection and full vision

Versatile applications

Space-saving construction

Simple operation

Lasting durability

Customer-specific solutions

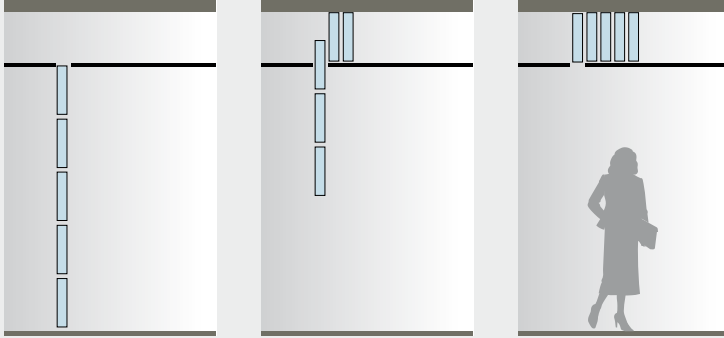
Installation and service from a single source

# Decorative Protection for Shops



Beyond opening hours, many shopping centres and shop windows are hidden behind unattractive doors, which often provide insufficient security.

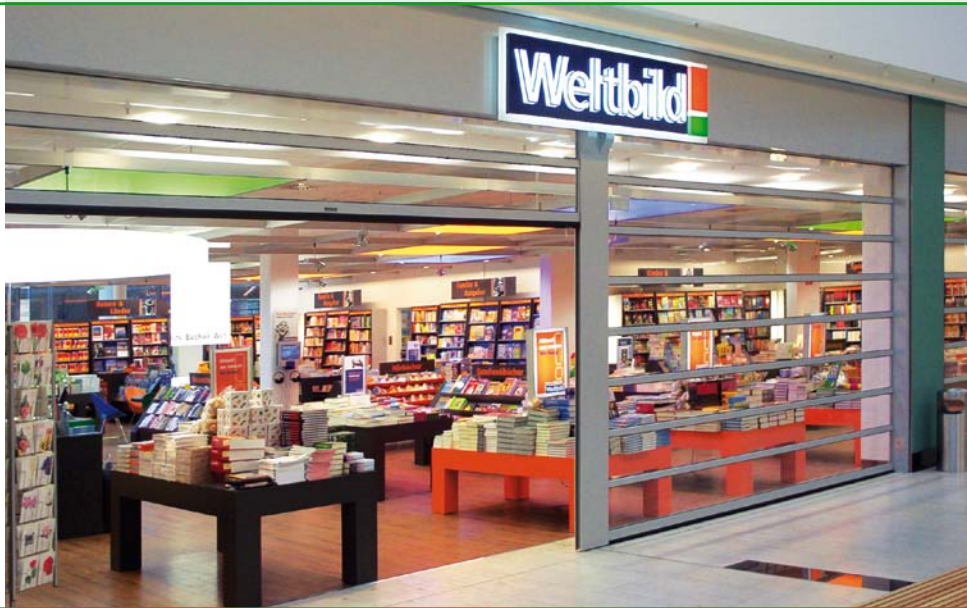
The Mobile Partition Wall enables potential customers to see your merchandise at any time, enhancing the appearance of your business, while steel reinforced aluminium profiles protect against theft and extreme force.



Upon opening, the elements of the partition wall park and store in a space-saving manner in the cassette, e. g. above a suspended ceiling, ensuring a tidy appearance with full accessibility.



The Mobile Partition Wall is also suitable for more unusual constructions, for example use as a counter enclosure.



As soon as the wall is closed, a lock in the drive unit prevents the wall being able to be lifted.

The Partition Wall has no functional gaps between Partition Wall elements, preventing foreign objects and dirt reaching the interior.



## Aesthetically Pleasing Security for Banks



Security is imperative in the banking business. During business hours the self-service area and the service centre are joined, however, beyond business hours the two areas must be securely separated from each other.

The electrically operated Partition Wall for banks provides excellent protection when closed, without curtailing the area available for customer interaction.



BUFEI

Men  
Women  
Kids  
Accessories  
Home  
H&M





# Attractive Versatility



We can offer unobstructed access to shops with wide openings through utilising a sideward moveable track.

Each Butzbach Partition Wall is customized to the customer's specifications.

By colour coating the aluminium profiles or by adding individual design ornaments, the Butzbach Partition Wall can be optimally adapted to your corporate identity and the installation location.



Stacking doors



Sectional doors



XXL doors



High-speed doors



Mobile partition walls



Sliding doors



Façade systems



Service

# Quality and All Encompassing Service

We guarantee distinct quality and longevity in our customised door solutions, having had over 30 years of experience in development, designing, manufacturing, assembling and after sales service.

Butzbach employees operate according to the motto: "Everything from a single source".

In providing all the service and support you will need, we can ensure that you will be completely satisfied.

At Butzbach, service starts with consultation. Our focus is on in-depth and constructive dialogue with our customers. Our team of consultants create individual door solutions efficiently, competently and according to your specification and needs. You will be assigned a personal contact who will work with you for the entirety of the project. Your contact knows your individual specifications and can thus, react to changing requirements.

Our installation and service stations are located throughout Germany, so we can guarantee quick and costefficient service. Please contact us to find out about special service and maintenance offers available now.

Butzbach GmbH  
Industrietore  
Robert-Bosch-Strasse 4  
89257 Illertissen (Germany)

Tel. +49 (0) 73 03 / 9 51 - 0  
Fax +49 (0) 73 03 / 95 14 70  
info@butzbach.com  
www.butzbach.com

**BUTZBACH**  
DOORS + FAÇADES